

Uscn Life Science Inc. Wuhan

Website: www.uscnk.com

Phone: +86 27 84259552

Fax: +86 27 84259551

E-mail: uscnk@uscnk.com

ELISA Kit for Cyclic Adenosine Monophosphate(cAMP)

Instruction manual

Cat. No.: E0003Ge

Size: 96 tests

**FOR IN VITRO USE AND RESEARCH USE ONLY
NOT FOR USE IN DIAGNOSTIC OR THERAPEUTIC PROCEDURES**

INTENDED USE

The ELISA kit is a competitive inhibition enzyme immunoassay technique for the in vitro quantitative measurement of cAMP in serum, plasma, tissue homogenates and other biological fluids.

REAGENTS AND MATERIALS PROVIDED

Reagents	Quantity
Pre-coated, ready to use 96-well strip plate	1
Plate sealer for 96 wells	4
Standard (liquid)	2
Standard Diluent	1 × 20ml
Detection Reagent A	1 × 120µl
Assay Diluent A (2 x concentrate)	1 × 6ml
TMB Substrate	1 × 9ml
Stop Solution	1 × 6ml
Wash Buffer(30 x concentrate)	1 × 20ml
Instruction manual	1

MATERIALS REQUIRED BUT NOT SUPPLIED

1. Microplate reader with 450 ± 10 nm filter.
2. Precision single and multi-channel pipettes and pipette tips with disposable tips.
3. Eppendorf Tubes for diluting samples.
4. Deionized or distilled water.
5. Absorbent paper for blotting the microtiter plate.
6. Container for Wash Solution

STORAGE OF THE KITS

All the reagents should be kept according to the labels on vials. The **Standard, Detection Reagent A** and the **96-well strip plate** should be stored at -20°C upon being received. The unused strips should be kept in a sealed bag with the desiccant provided to minimize exposure to damp air. The test kit may be used throughout the expiration date of the kit (six months from the date of manufacture). Opened test kits will remain stable until the expiring date shown, provided it is stored as prescribed above.

TEST PRINCIPLE

This assay employs the competitive inhibition enzyme immunoassay technique. A polyclonal antibody specific for cAMP has been pre-coated onto a microplate. A competitive inhibition reaction is launched between HRP labeled cAMP and unlabeled cAMP (Standards or samples) with the pre-coated antibody specific for cAMP. The more the amount of cAMP in samples, the less the HRP labeled cAMP bound by pre-coated antibody. The substrate solution are added to the wells, respectively. And the color develops in opposite to the amount of cAMP bound in the initial step. The color development is stopped and the intensity of the color is measured.

SAMPLE COLLECTION AND STORAGE

Serum - Use a serum separator tube and allow samples to clot for two hours at room temperature or overnight at 4°C before centrifugation for 20 minutes at approximately 1000×g. Assay freshly prepared serum immediately or store samples in aliquot at -20°C or -80°C for later use. Avoid repeated freeze/thaw cycles.

Plasma - Collect plasma using EDTA or heparin as an anticoagulant. Centrifuge samples for 15 minutes at 1000×g at 2 - 8°C within 30 minutes of collection. Remove plasma and assay immediately or store samples in aliquot at -20°C or -80°C for later use. Avoid repeated freeze/thaw cycles.

Tissue homogenates - The preparation of tissue homogenates will vary depending upon tissue type. For this assay, tissue was rinsed with 1X PBS to remove excess blood, homogenized in 5~10 mL of 1X PBS and stored overnight at ≤ -20° C. After two freeze-thaw cycles were performed to break the cell membranes, the homogenates were centrifuged for 5 minutes at 5000 x g. Remove the supernate and assay immediately or aliquot and store at ≤ -20° C.

Other biological fluids - Centrifuge samples for 20 minutes at 1000 ×g. Remove particulates and assay immediately or store samples in aliquot at -20°C or -80°C for later use. Avoid repeated freeze/thaw cycles.

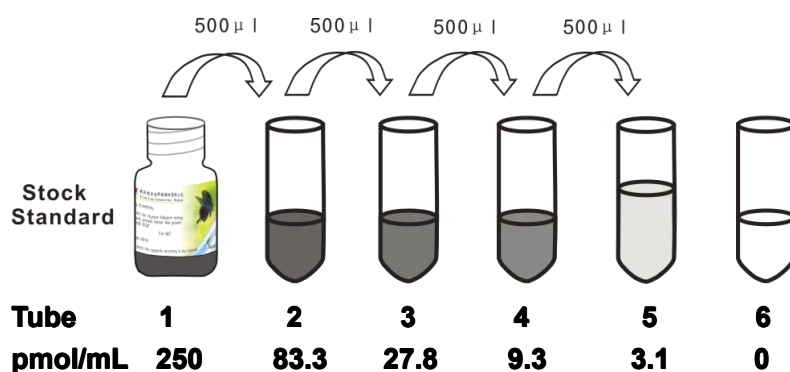
Note:



1. Samples to be used within 5 days may be stored at 2-8°C, otherwise samples must be stored at -20°C (≤1 month) or -80°C (≤ 2 months) to avoid loss of bioactivity and contamination.
2. When performing the assay slowly bring samples to room temperature.
3. Sample hemolysis will influence the result, so hemolytic specimen can not be detected.

REAGENT PREPARATION

1. Bring all kit components and samples to room temperature(18-25°C) before use.
2. **Standard** - Reconstitute the **Standard** with 0.8 ml of **Standard Diluent**, kept for 10 minutes at room temperature, shake gently(not to foam). The concentration of the standard in the stock solution is 250 pmol/mL. Please prepare 5 tubes containing 1ml Standard Diluent and produce a triple dilution series according to the picture shown below. Mix each tube thoroughly before the next transfer. Set up 5 points of diluted standard such as 250 pmol/mL, 83.3 pmol/mL, 27.8 pmol/mL, 9.3 pmol/mL, 3.1 pmol/mL, and the last EP tubes with **Standard Diluent** is the blank as 0 pmol/mL.



3. **Assay Diluent A** - Dilute 6mL of Assay Diluent A (2×) with 6ml of deionized or distilled water to prepare 12 mL of Assay Diluent A . **The prepared working dilution can't be frozen.**
4. **Detection Reagent A** - Briefly spin or centrifuge the stock Detection A before use. Dilute to the working concentration with working **Assay Diluent A**(1:100).
5. **Wash Solution** - Dilute 20mL of Wash Solution Concentrate(30×) with 580ml of deionized or distilled water to prepare 600 mL of Wash Solution(1×).
6. **TMB substrate** - Aspirate the needed dosage of the solution with sterilized tips and do not dump the residual solution into the vial again.



Note:

1. Prepare standard within 15 minutes before assay. Please do not dissolve the reagents at 37°C directly.
2. Making serial dilution in the wells directly is not permitted.
3. Please carefully reconstitute Standards or working Detection Reagent A according to the instruction, and avoid foaming and mix gently until the crystals have completely dissolved. To minimize imprecision caused by pipetting, use small volumes and ensure that pipettors are calibrated. It is recommended to suck more than 10μl for once pipetting.
4. The reconstituted Standards, Detection Reagent A can be **used only once**.
5. If crystals have formed in the Wash Solution concentrate(30×), warm to room temperature and mix gently until the crystals have completely dissolved.

ASSAY PROCEDURE

Please predict the concentration before assaying. If values for these are not within the range of the standard curve, users must determine the optimal sample dilutions for their

particular experiments.

1. Determine wells for diluted standard, blank and sample. Prepare 5 wells for standard, 1 well for blank. Add 50 μ l each of dilutions of standard (read Reagent Preparation), blank and samples into the appropriate wells, respectively. And then add 50 μ l of **Detection Reagent A** to each tube immediately. Shake the plate gently. Cover with a Plate sealer. Incubate for 1 hour at 37°C. Detection Reagent A may appear cloudy. Warm to room temperature and mix gently until solution appears uniform.
2. Aspirate the solution and wash with 400 μ l of 1X Wash Solution to each well using a squirt bottle, multi-channel pipette, manifold dispenser or autowasher, and let it sit for 1~2 minutes. Remove the remaining liquid from all wells completely by snapping the plate onto absorbent paper. Repeat 5 times. After the last wash, remove any remaining Wash Buffer by aspirating or decanting. Invert the plate and blot it against absorbent paper.
3. Add 90 μ l of **Substrate Solution** to each well. Cover with a new Plate sealer. Incubate for 15 - 25 minutes at 37°C (Don't exceed 30 minutes). Protect from light. The liquid will turn blue by the addition of Substrate Solution.
4. Add 50 μ l of **Stop Solution** to each well. The liquid will turn yellow by the addition of Stop solution. Mix the liquid by tapping the side of the plate. If color change does not appear uniform, gently tap the plate to ensure thorough mixing.
5. Remove any drop of water and fingerprint on the bottom of the plate and confirm there is no bubble on the surface of the liquid. Then, run the microplate reader and conduct measurement at 450nm immediately.

Note:



1. **Assay preparation:** Keep appropriate numbers of strips for 1 experiment and remove extra strips from microtiter plate. Removed strips should be resealed and stored at 4°C until the kits expiry date.
2. **Samples or reagents addition: Please use the freshly prepared Standard.** Please carefully add samples to wells and mix gently to avoid foaming. Do not touch the well wall as possible. For each step in the procedure, total dispensing time for addition of reagents or samples to the assay plate should not exceed 10 minutes. This will ensure equal elapsed time for each pipetting step, without interruption. Duplication of all standards and specimens, although not required, is recommended. To avoid cross-contamination, change pipette tips between additions of each standard level, between sample additions, and between reagent additions. Also, use separate reservoirs for each reagent.
3. **Incubation:** To ensure accurate results, proper adhesion of plate sealers during incubation steps is necessary. Do not allow wells to sit uncovered for extended periods between incubation steps. Once reagents have been added to the well strips, DO NOT let the strips DRY at any time during the assay. Incubation time and temperature must be observed.
4. **Washing:** The wash procedure is critical. Complete removal of liquid at each step is essential to good performance. After the last wash, remove any remaining Wash Solution by aspirating or decanting and remove any drop of water and fingerprint on the bottom of the plate. Insufficient washing will result in poor precision and falsely

elevated absorbance reading.

5. **Controlling of reaction time:** Observe the change of colour after adding **TMB Substrate** (e.g. observation once every 10 minutes), if the colour is too deep, add **Stop Solution** in advance to avoid excessively strong reaction which will result in inaccurate absorbance reading.
6. **TMB Substrate** is easily contaminated. Please protect it from light.

CALCULATION OF RESULTS

This assay employs the competitive inhibition enzyme immunoassay technique, so there is an inverse correlation between cAMP concentration in the sample and the assay signal intensity. Low levels of cAMP result in a high O.D value, while a high concentration of cAMP results in a low signal.

Average the duplicate readings for each standard, control, and samples. Create a standard curve by using computer software capable of generating a four parameter logistic (4-PL) curve-fit. As an alternative, the data may be linearized by plotting the log of the cAMP concentrations versus the O.D. of the standard and the best fit line can be determined by regression analysis. If samples have been diluted, the concentration read from the standard curve must be multiplied by the dilution factor.

DETECTION RANGE

3.1-250 pmol/mL. The standard curve concentrations used for the ELISA's were 250 pmol/mL, 83.3 pmol/mL, 27.8 pmol/mL, 9.3 pmol/mL, 3.1 pmol/mL.

SENSITIVITY

The minimum detectable dose of cAMP is typically less than 1.2 pmol/mL.

The sensitivity of this assay, or Lower Limit of Detection (LLD) was defined as the lowest protein concentration that could be differentiated from zero. It was determined the mean O.D. Value of 20 replicates of the zero standard added by their three standard deviations.

SPECIFICITY

This assay has high sensitivity and excellent specificity for detection of cAMP. No significant cross-reactivity or interference was observed.

TYPICAL DATA

In order to make the calculation easier, we plot the O.D. value of the standard (X-axis) against the known log of concentration of the standard (Y-axis), although concentration is indeed the independent variable while O.D. value is the dependent variable. The O.D. values of the standard curve may vary according to the conditions of assay performance (e.g. operator, pipetting technique, washing technique or temperature effects). This curve is provided for demonstration only. The customers should establish their own standard curve for each test conducted.

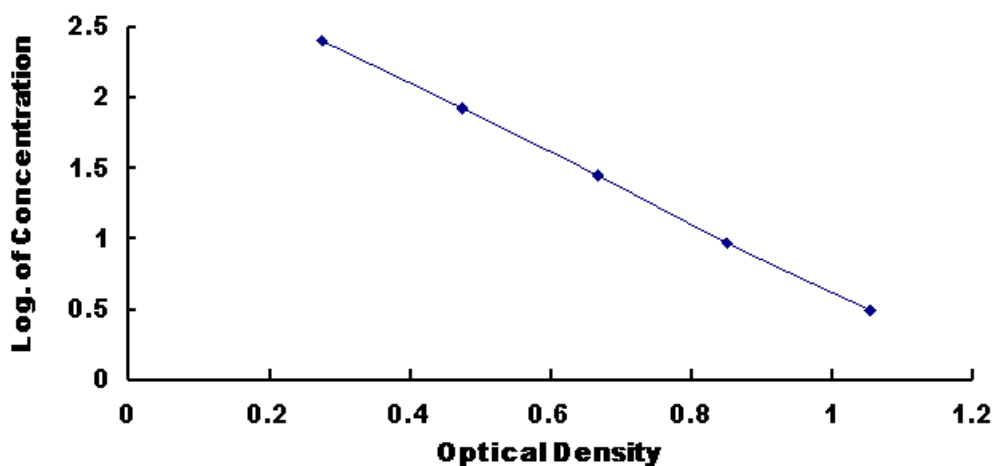


Figure 1: Typical Standard Curve for cAMP ELISA.



IMPORTANT NOTE

1. Limited by the current condition and scientific technology, we can't completely conduct the comprehensive identification and analysis on the raw material provided by suppliers. So there might be some qualitative and technical risks to use the kit.
2. The final experimental results will be closely related to validity of the products, operation skills of the end users and the experimental environments. Please make sure that sufficient samples are available.
3. This assay is designed to eliminate interference by soluble receptors, ligands, binding proteins, and other factors present in biological samples. Until all factors have been tested in the Quantikine Immunoassay, the possibility of interference cannot be excluded.
4. Do not mix or substitute reagents from one kit lot to another. Use only the reagents supplied by manufacturer.
5. Protect all reagents from strong light during storage and incubation. All the bottle caps of reagents should be covered tightly to prevent the evaporation and contamination of microorganism.
6. There may be some foggy substance in the wells when the plate is opened at the first time. It will not have any effect on the final assay results. Do not remove microtiter plate from the storage bag until needed.
7. A microtiter plate reader with a bandwidth of 10nm or less and an optical density range of 0-3 O.D. or greater at 450nm wavelength is acceptable for use in absorbance measurement.
8. Valid period: six months.
9. The instruction manual also suit for the kit of 48T, but all reagents of 48T kit is reduced by half.

PRECAUTION

The Stop Solution suggested for use with this kit is an acid solution. Wear eye, hand, face, and clothing protection when using this material.

AFTER-SALES SERVICE

Tel: 027-84259508

Fax: 027-84259458

E-mail: tech@uscnk.com